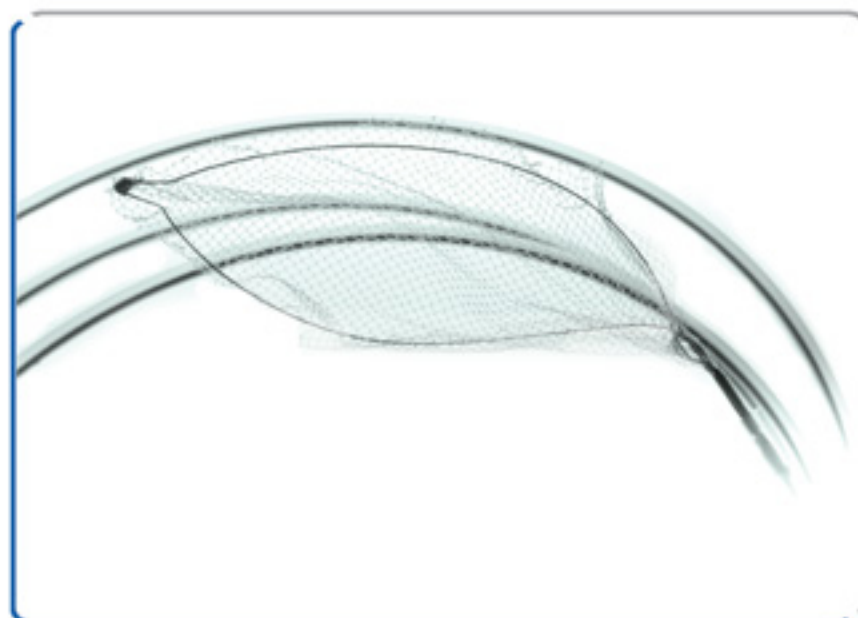
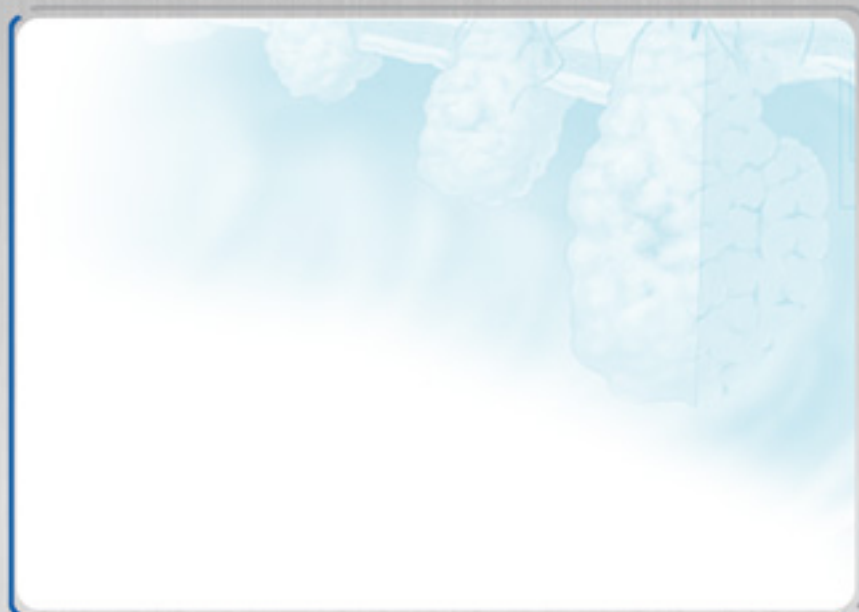


# Rotatable Loop net for polyp retrieval



## Indications

Retrieval nets used to retrieve food bolus or polyp fragments after the resection with a polypectomy snare in combination with an electrosurgical unit.



## Features



- 360° rotatable version.
- Continued examination with easy visibility through the transparent net material.
- Large net for the retrieval of large foreign bodies.
- Preserves the morphology of specimens during the extraction.
- Packaged sterile for single use.
- 10 pcs. per box.

References	Lenght	Sheath diameter	Net diameter	Sheath
MED-132-NET	230 cm	2,5 mm	40x75 mm	PTFE
MED-133-NET	230 cm	2,5 mm	30x60 mm	PTFE

## Specifications

- Pebax handle.
- PTFE catheter.
- Stainless steel braided catheter.